

Project **Rehabilitación de Torre Nazari**
Location site Spain, Almería, Tahal, PLaza Mayor
Client Conserjería de Cultura de la Junta de Andalucía
Completion date Enero 2.008
Budget 639.239,74 €



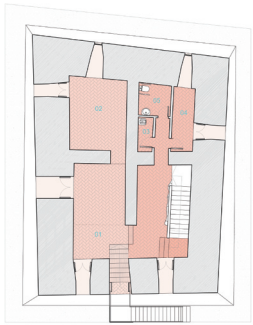
Tahal Castle dates back to the 14th century: it was built by the Arabs when the Nazari kingdom reigned in the south of the Iberian Peninsula. This remote and humble village was then in the frontier between Christians and Nazaris at a time when the Reconquest had progressed and the Arab kingdom was reduced to the small bastion of Andalusia. Tahal Castle was both a watch tower and a place where the local population took refuge during raids from their enemies.

After the fall of the Nazari kingdom the castle lost its main function and slowly deteriorated, subsequently falling in a state of dilapidation. The roof collapsed and as a result most of the interior floors and masonry walls did so.

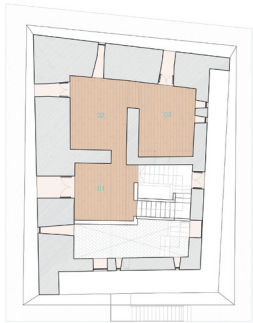
The commission was to convert the Castle into a museum and a multipurpose space. In order to preserve the typological identity of the Castle, the architect reinstated floors, interior walls and the staircase following the traces of the pre-existing ones. Nevertheless, given the lack of accounts on its original layout, the design is not a reconstruction, but rather a contemporary and poetic rendering of the space that the building encloses.

The design also faces the material differentiation between the new insertions and the existing structure. To distinguish the remaining wooden floor slabs from those that are newly inserted, steel structure is used in the latter ones as well as in the roof trusses. This way the design tries to establish, in a poetic and subtle way, an entailment between both materialities creating a progressive transition between them.

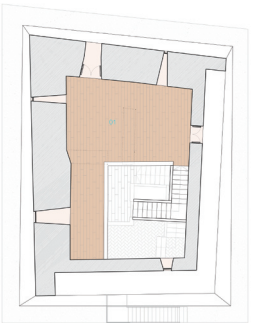
It was also the architects aim to maintain the spatial quality that the ruined castle had before the conversion, when it was almost bare in the interior. Thus the floor slabs occupy the different levels partially, leaving a space of double and triple height that allows the contemplation of the generous void inside the castle. The staircase then becomes part of an "architectural promenade" that walks the visitor through the empty space upwards.



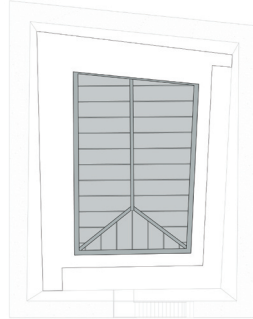
GROUND FLOOR
01. LOBBY 02. GALLERY 1 03. CLEANING 04. STORE 05. REST ROOM



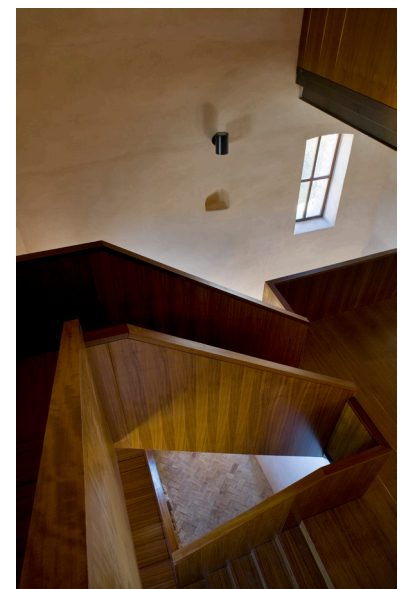
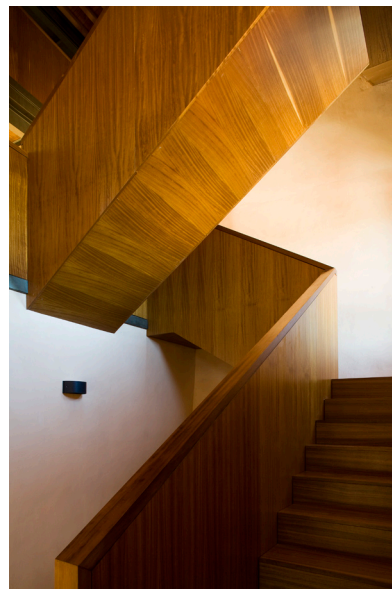
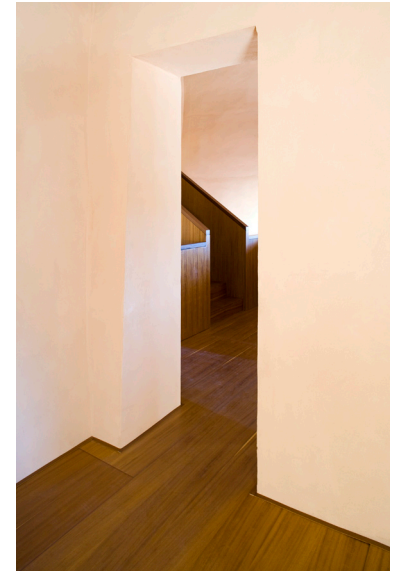
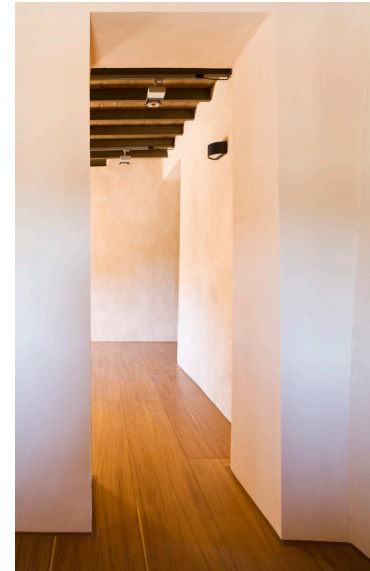
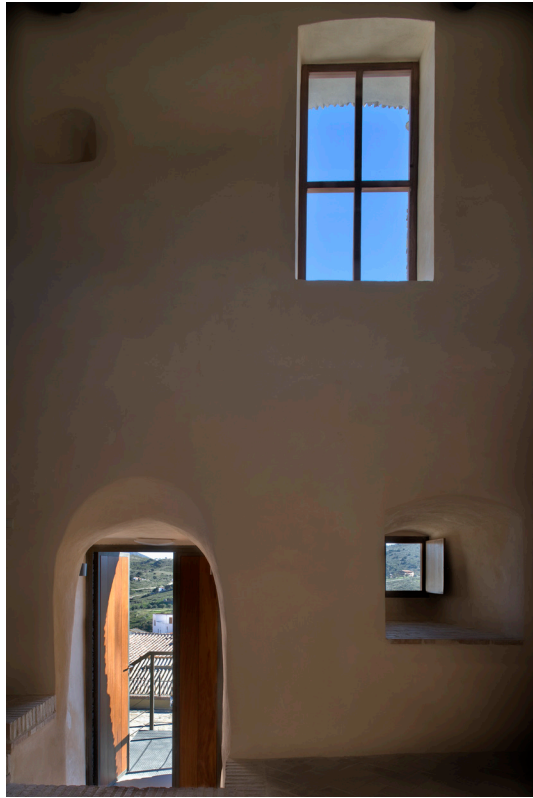
FIRST FLOOR
01. GALLERY 2 02. GALLERY 3 03. GALLERY 4

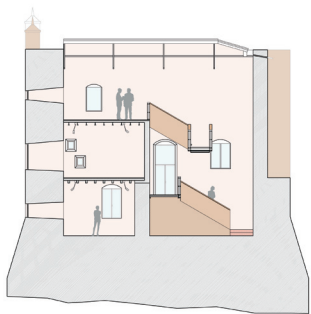


SECOND FLOOR
01. GALLERY 5

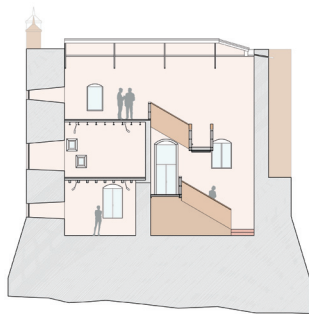


ROOF PLAN

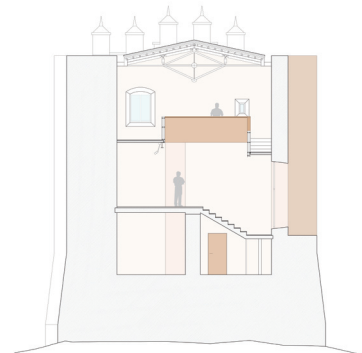




SECCION DD'



SECCION DD'



SECCION FF'

